

/ smart 7 / smart 8 / smart 8 v4 / impulse / impulse v2
/ impulse v4 / ocean / ocean 8 v4 / ocean luxe

Class 23/32: the **SMART** en **IMPULSE** collections are designed for:

- Heavy domestic use: Bedrooms, living rooms, kitchens, entrances
- General commercial use: Classrooms, small offices, hotels, boutiques



The **OCEAN** collection can be used in the above rooms, and additionally in **bathrooms**.

Laminate is not suitable for saunas or outdoor use.

For a fast installation and a perfect result that fulfills the warranty conditions, we advise to follow the below mentioned installation instructions carefully.

1. planning your installation



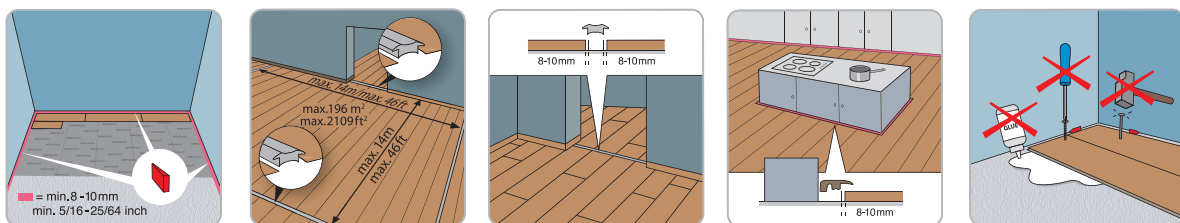
It is important to store the laminate boxes at room temperature for at least 48 hours before the installation. Do not open the packs and stack them in a way so they have maximum contact with the air. The floor should be installed at a room temperature of 18-25°C and a relative humidity of 40-60%

tools

- electrical or hand saw
- spacers
- hammer and tapping block if you prefer a snap installation
- installation iron can be convenient when there is no room to use a tapping block (against the wall)
- measurer and pencil, T-square

For your safety, use protective clothing: gloves, dust mask, protective glasses.

Apart from tools do not forget the skirtings and finishing profiles (doorways, transitions to other floors,...), and a suitable BerryAlloc underlay or moisture barrier!

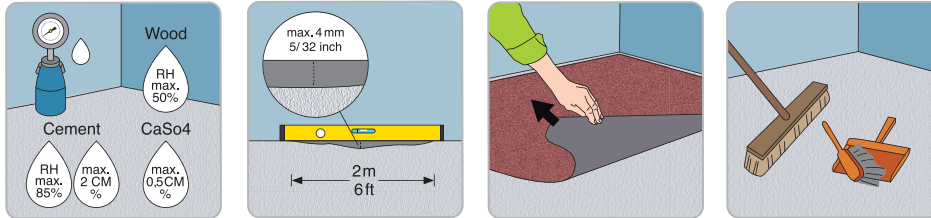


BerryAlloc laminate should be installed as floating flooring which means that the floor should be able to move:

- Do not screw or glue the floorboards to the subfloor.
- Do not install laminate floor under fixed constructions such as kitchen cabinets or built-in closets.
- Leave a 8-10mm expansion gap to walls and other fixed constructions so that the flooring can move.
- Always install expansion profiles in doorways.
- In areas which do not join symmetrically and when the room length/width exceeds 14m, install expansion profiles.

2. preparing the subfloor

BerryAlloc laminate can be installed on most hard subfloors, e.g. chip/plasterboards, PVC or concrete (be sure that the existing subfloor construction is fixed).



The subfloor must be totally dry:

- Wooden and wood based material, max. 50 % relative humidity
- Concrete and light concrete floor, max. 2,0 CM % (1,8 CM % if floor heating)
- Plaster and plaster based floor, max. 0,5 CM % (0,3 CM % if floor heating)

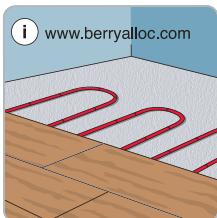
The subfloor has to be even (max. height difference of 4mm per 2m). Sharp edges must be smoothed and holes filled. This is important because an uneven subfloor can cause squeaking noises.

Soft material like a wall-to-wall carpet needs to be removed.

Clean the subfloor before you start the installation.

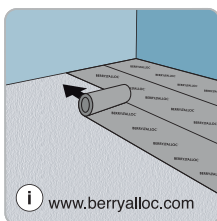
On an existing wooden floor, BerryAlloc laminate should be installed across the old floorboards.

3. floor heating / cooling



If you have a subfloor heating system, be sure to read our separate manual for installing laminate on top of floor heating.

4. underlays

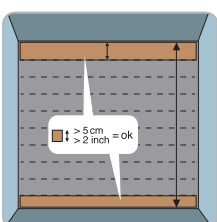


We recommend to install your laminate with a BerryAlloc underlay that suits your situation: reduce footfall noise, floor heating compatible,....

BerryAlloc underlays are specially developed for our floors, and with the same high quality standards, to ensure a perfect result. Please check our underlay guide for more info.

5. getting started

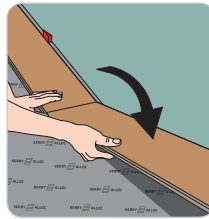
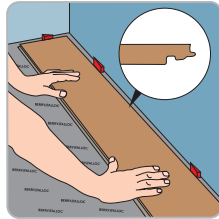
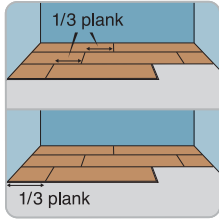
Direction of the planks: the floor will look at its best if installed parallel to the incoming light (short side facing the light).



Measure the length of the room from the point where you plan to start to the wall where you will end. Divide this by the width of a plank. The purpose is to never end with a plank that is less than 5cm wide. If that is the case, you should modify the width of the first row (saw the plank so that you don't start with a full plank, but it should be more than 5cm).

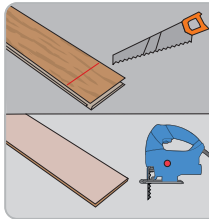
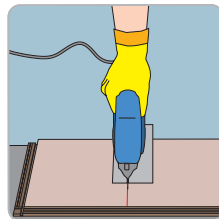
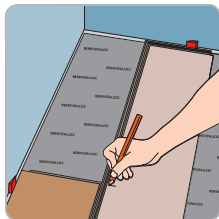


Check all planks for visible defects in optimal light conditions, both before and during installation. Planks with defects must not be used.



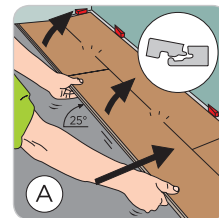
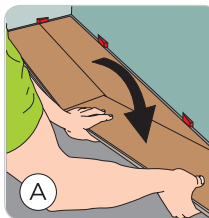
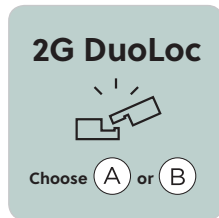
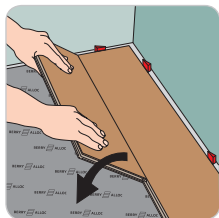
For the most natural floor pattern, make sure to mix the designs of the planks across the floor. The end joints should be staggered min. 1/3 of a plank when installing the floorboards. The first and the last floorboard in each row should have a minimum length of 1/3 of a plank.

Start the first row with the tongue sides to the wall, and put the spacers for the expansion gap of 8-10mm. At the end of the row, to cut a plank in the exact length, put a plank on the reverse side against the wall – do not forget the expansion gap. Mark where the plank has to be cut and use a T-square to draw the cutting line.



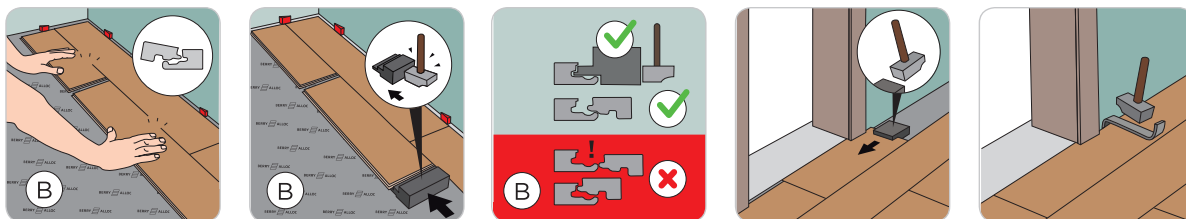
If using a hand saw, cut on the pattern side, if using an electrical jigsaw, always cut on the back side of the plank. A sharp saw blade is a must for the best result!

6. a quick and easy installation

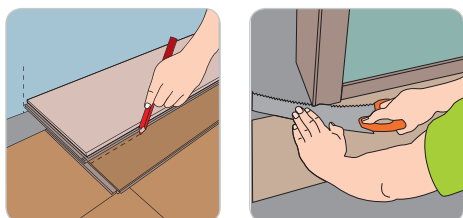


The DuoLoc system allows you to install in 2 different ways, A or B:

- Ⓐ Without tapping block: connect the second row on the short sides first. Make sure the planks are perfectly aligned. Then lift the plank to an angle of +/-25° and lock the long side in the previous row.



- B** With tapping block/installation iron and hammer : lay the first plank of the second row. Lay the second plank right next to it and lock the long side in the previous row. Check the position of the locking system, because an incorrect position can damage the locking system. Put the tapping block on the other end of the plank and also make sure that the tapping block is used in the right position. Then gently tap the block until the joint closes. If there is no room for a tapping block, use the installation iron.

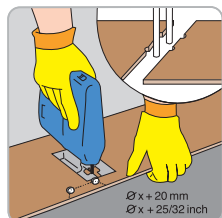


To install the last row, position a panel exactly on top of the previous row. Place another panel upside down up to the wall and mark the panel underneath. Cut the marked panel to size and fit in place. This method should be repeated for each panel until the last row is complete.

Wooden doorframes should be shortened enough to make a plank and underlay fit underneath.

Lay a panel face down next to the door frame.

Saw the panel, then slide the plank under the door-frame. Keep an expansion gap under the doorframe of 8-10mm!



If you have heating pipes, measure their exact position and mark it on the laminate.

Add 20mm to the dimension of the pipe, because the laminate has to be able to move in all directions around the pipe.

Saw from the drilling holes to the side of the laminate in an angle of 45° and put the laminate in place.

7. a perfect finish

BerryAlloc offers a wide range of accessories with a timeless design for the finishing touch:

- Skirtings 6cm and 8cm
- Quarter rounds
- Floor profiles: T-profile, reducer, end profile
- Aluminium floor profiles

Paintable white skirtings are also available and can be used unpainted, or they can be painted in the same colour as your wall.

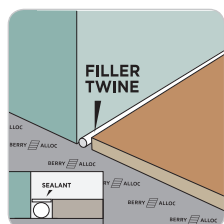
When installing accessories, always keep in mind that the floor has to be able to move. This means:

- Skirtings should never be attached to the floor, they can be fixed to the wall with clips or in case your walls are not straight, use the BerryAlloc glue to glue the skirting to the wall.
- After you have installed a skirting or profile, do not seal/fix it to the laminate with sealant. The movement of the laminate will cause cracks in the sealing product which makes the sealant ineffective and unesthetic.
- Joints on fixed building elements (door frames, heating pipes, etc.) should never be completely sealed with elastic filler. Use a Fillertwine first and then finish with elastic filler, this allows the floor to move.
- Profiles, doorstops and suchlike should not be screwed through the laminate into the subfloor.

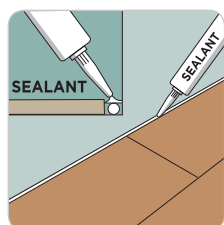


additional Hydro+ instructions for the installation of Ocean, Ocean 8 V4 and Ocean Luxe accessories.

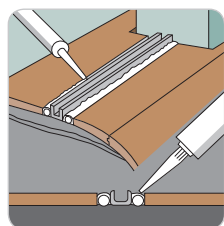
After installing a Hydro+ laminate, it is important to seal the edges of the laminate with a sealant that repels water.



STEP 1: Put a **BerryAlloc Fillertwine** in the expansion gap. The fillertwine allows the laminate to expand/shrink. Also use a fillertwine in the expansion gap under floor profiles such as T-profiles, reducers,...



STEP 2: Fill the expansion gap with **Hydro+ Sealant**. The sealant should touch the wall and the laminate and be applied in a way that it completely closes the gap.



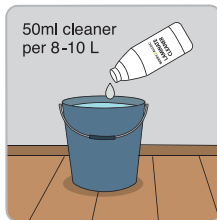
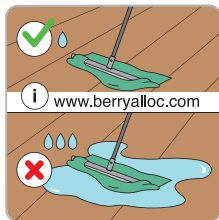
With floor profiles, use sealant on top of the **fillertwine** before you install the profile, to avoid water contact with the side and base of the laminate.



Hydro+ accessories.

We offer the Hydro+ accessories as a set, that is suitable to seal 10 meters. The accessories are also separately available.

8. care and maintenance



A laminate floor is very easy to clean:

DRY CLEANING: with a brush, mop with dry wipes or vacuum cleaner

WET CLEANING with a well wrung-out cloth – avoid using too much water!

Clean up any spilled liquids immediately.

We strongly recommend to use the BerryAlloc laminate cleaner, it's specially developed to clean our laminate floors and leaves no traces.

Never use steam cleaners on laminate.



Put doormats at every entrance to protect your laminate from dirt and sand.

Lift heavy furniture and put felt pads on the legs of your chair. Use a protective floor mat under your castor chair.

Laminate can not be polished or treated with products that contain wax or oil.

For more details: read our care and maintenance manual

9. warranty

By following the above mentioned instructions you will extend the longevity of your laminate flooring and ensure the validity of the warranty.

We refer to our warranty conditions or warranty policy for more info.

enjoy your berryalloc floor!